

Jenna Burlingham Gallery

Hampshire

PRESS RELEASE

EXHIBITION AT JENNA BURLINGHAM GALLERY



Elizabeth Blackadder RSA RA (1931-2021)

**Quiet Observations
Landscapes and Interiors 1955-1975
Works from the Artist's Estate**

Saturday 6th June to Saturday 4th July 2026

All works come directly from the Blackadder Houston Bequest which is managed by the Royal Scottish Academy

Illustrated above: *White Studio Table*, 1966. Photo Boz Gagovski © Jenna Burlingham Gallery
Image courtesy of the Royal Scottish Academy / RSA Blackadder Houston Bequest

About the Exhibition

Elizabeth Blackadder RSA RA (1931-2021)

**Quiet Observations
Landscapes and Interiors 1955-1975
Works from the Artist's Estate**

**Saturday 6th June to Saturday 4th July 2026
Open Monday to Saturday 10am to 6pm
and outside these times by appointment**

**Jenna Burlingham Gallery
Rope House, 10-12 George Street, Kingsclere
Hampshire RG20 5NQ**

**www.jennaburlingham.com
01635 298855
info@jennaburlingham.com**

Jenna Burlingham Gallery is delighted to present
an exhibition of paintings and works on paper
from the Estate of Elizabeth Violet Blackadder RSA RA (1931-2021).

The exhibition looks beyond the artist's celebrated floral subjects
to the quietly compelling landscape and interior still life compositions
from the first two decades of her artistic career.

The paintings and works on paper range from
early landscapes made soon after her graduation from Art College in the mid 1950s
to still life paintings made in her Edinburgh studio in the mid 1970s.

With this show Jenna Burlingham Gallery, located on the Hampshire/Berkshire border,
offers collectors a rare chance to see a focussed exhibition of Blackadder's work.

This exhibition builds on the Gallery's longstanding commitment
to championing the work of female artists
and a history of successfully placing Blackadder's work
with private collectors and with institutions.

All the works come directly from the Blackadder Houston Bequest
which is managed by the Royal Scottish Academy.

Selected Images

All images Courtesy of the Royal Scottish Academy / RSA Blackadder Houston Bequest



White Studio Table, 1966, oil on canvas, 102 x 127 cm. Photo Boz Gagovski © Jenna Burlingham Gallery
Image courtesy of the Royal Scottish Academy / RSA Blackadder Houston Bequest



Borders Landscape, 1967, oil on canvas, 71 x 91 cm. Photo Boz Gagovski © Jenna Burlingham Gallery
Image courtesy of the Royal Scottish Academy / RSA Blackadder Houston Bequest



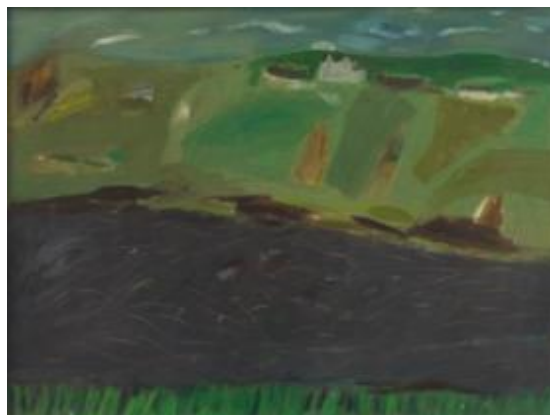
Still Life, Brown and White, circa 1975, oil on canvas, 153 x 153 cm. Photo Boz Gagovski © Jenna Burlingham Gallery
Image courtesy of the Royal Scottish Academy / RSA Blackadder Houston Bequest



Landscape near Florence, 1955, watercolour and gouache on paper, 49 x 75 cm



Still Life with Sea Urchin, 1963, oil on canvas, 86 x 112 cm



Landscape, Western Isles, 1966, oil on canvas, 76 x 102 cm



Still Life with Bead Bracelet, 1974, oil on canvas, 102 x 127 cm

Images courtesy of the Royal Scottish Academy / RSA Blackadder Houston Bequest



Elizabeth Blackadder photographed by John Houston, 1968
Image courtesy of the Royal Scottish Academy / RSA Blackadder Houston Bequest

About Elizabeth Blackadder RSA RA (1931-2001)

Dame Elizabeth Violet Blackadder was a distinguished British painter and printmaker who lived and worked in Scotland.

She was born in 1931 in Falkirk and went on to study Fine Art at Edinburgh University from 1949 to 1954, spending her final year at Edinburgh College of Art.

Taught by celebrated artists such as William McTaggart and William Gillies, she graduated in 1954 with a first-class degree.

Having won a Carnegie Traveling Scholarship, Blackadder visited Yugoslavia, Greece and Italy from 1954 to 1955. There she studied the art of the Byzantine and the Quattrocento as well as the work of contemporary artists. Throughout her life she continued to travel widely in Europe, the USA and Japan, gathering inspiration for her landscape, interior still life and flower paintings.

In 1956 Blackadder married fellow student John Houston and began teaching part-time at Edinburgh College of Art.

After holding her first solo exhibition in 1959 at the 57 Gallery in Edinburgh, Blackadder went on to exhibit regularly in Edinburgh, London and internationally.

The National Galleries of Scotland's retrospective exhibition of her work held at the Royal Scottish Academy in Edinburgh in 2011 remains one of their most well attended and best loved shows.

By the time of her death in 2021 Blackadder had been awarded an extraordinary number of honours for her contribution to art. She was the first woman to be elected to both the Royal Scottish Academy (1972) and the Royal Academy (1976). An OBE followed in 1982, elevated to a DBE in 2003. She was awarded the post of Her Majesty's Painter and Limner in Scotland in 2000, and held honorary doctorates at the universities of Edinburgh, Aberdeen, Strathclyde, Glasgow, Stirling and St Andrews.



Jenna Burlingham Gallery. Photo: Boz Gagovski © Jenna Burlingham Gallery

About Jenna Burlingham Gallery

Jenna Burlingham Gallery was established fifteen years ago in the picturesque village of Kingsclere on the Hampshire / Berkshire border.

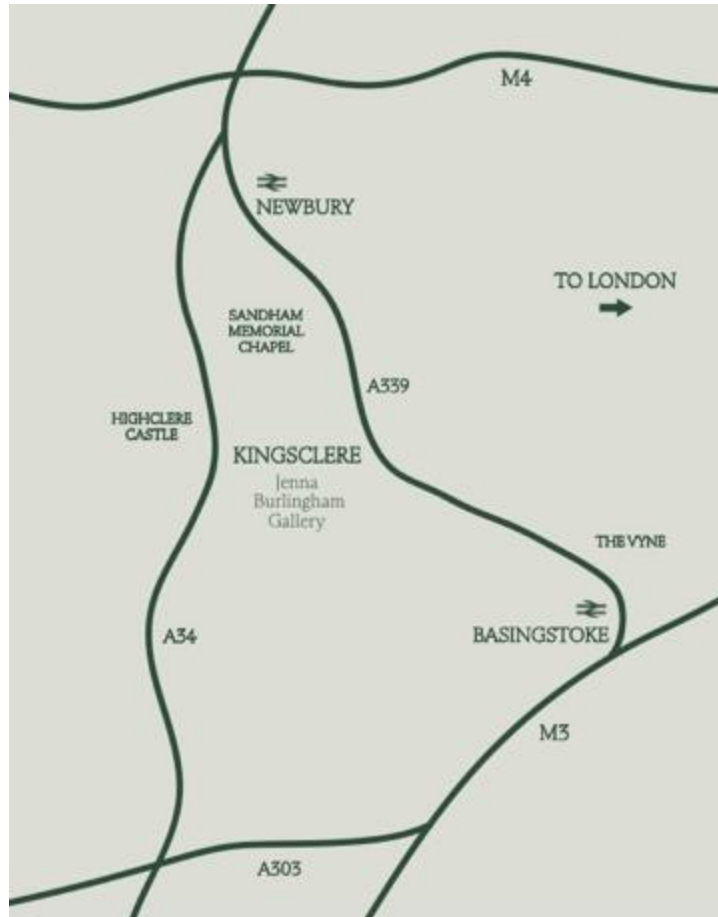
The gallery has since become a destination for buyers and sellers of Modern British and Contemporary paintings, prints, sculpture and ceramics.

In 2021 the gallery moved to Rope Yard, a former rope merchant's home and workshops where the extensive inventory is exhibited in carefully furnished interiors across 4,000 square feet of historic buildings.

This inventory ranges from entry-level to museum-quality works and the team is always on hand to give straightforward guidance to collectors, galleries and institutions, art advisers and interior decorators.

All works from the inventory can be seen on the website or in the gallery with on-site viewings by arrangement throughout the UK.

The gallery also regularly exhibits at the London art fairs including the Decorative Fair in Battersea, the London Art Fair in Islington and the British Art Fair in Chelsea.



How to find us

We are so easy to reach...

By car

Sitting close to both the M3 and M4
Kingsclere is just over an hour from London

By train

The nearest train station is Basingstoke
only a 45-minute journey from London Waterloo

Places to eat and stay

For suggestions visit www.jennaburlingham.com

Jenna Burlingham Gallery
Rope House, 10-12 George Street, Kingsclere, Hampshire RG20 5NQ
01635 298855 info@jennaburlingham.com www.jennaburlingham.com



Contact

For further information, images, or interview requests, please contact the gallery

Jenna Burlingham Gallery
Rope House, 10-12 George Street, Kingsclere
Hampshire RG20 5NQ
01635 298855

Camilla Trefgarne

Marketing and Press
01635 298855 and 07939 246298
camilla@jennaburlingham.com

www.jennaburlingham.com

JENNA BURLINGHAM GALLERY
ROPE HOUSE 10-12 GEORGE STREET KINGSCLERE HAMPSHIRE RG20 5NQ
01635 298 855 INFO@JENNABURLINGHAM.COM JENNABURLINGHAM.COM